

A GREAT WORK





Setting the Course, Designing the Plan, Laying the Groundwork, Building on a strong Foundation.

CCM's crisis response and assistance programs help to stop the cycle of loss and reset the course for individuals and families in crisis in our community.

A safe environment, reliable nutrition and stable housing allows a family to extend their horizon beyond the immediate to begin planning for the future.

- Hunger Fighting Programs
- Crisis Financial Assistance
- Education & Support Services
- Transitional Housing

CCM's asset-based approach to establishing a Personal Development Plan lays the groundwork for new experiences and life lessons that build confidence in the individual.

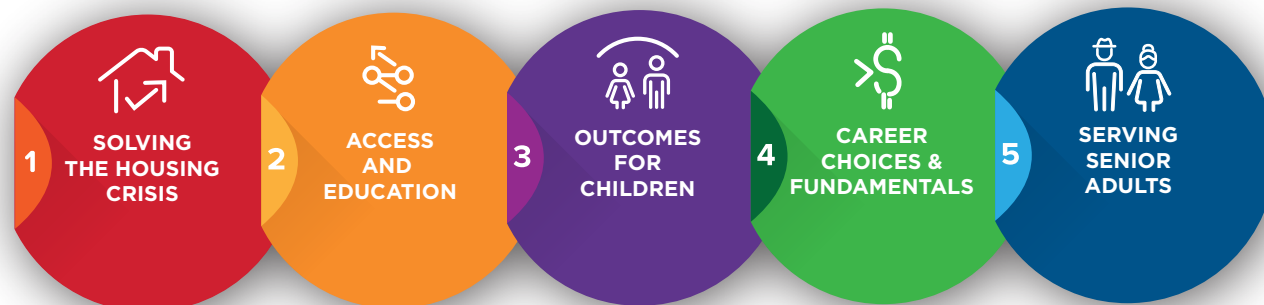
A foundation of faith, hard work, accountability and personal responsibility are the key factors for households to break free from the chains and overcome the obstacles to family and household stability.

CCM's current programs continue forty years of meeting people in crisis with a resolve to address Cabarrus County's number one unmet need: Housing.

- **Our Homeless to Housing project will provide hope and a path to stability for families with children, adults with disabilities and vulnerable seniors living alone.**
- **Our Huddle Housing project will offer safety, stability and a chance to chart a path for extremely low-income individuals in our community.**

These two innovative projects will build upon the experience and positive outcomes of CCM's housing programs and the vital services of partners throughout the community, to produce hundreds of stories of recovery and restoration, stability and graduation, purpose and regeneration for local families and friends both young and old.

Our **New Horizon Strategic Plan** focuses on Five Goals to achieve positive and meaningful outcomes for these populations and priority areas.



Our Priority Populations are

- Individuals & Families in Crisis
- Children Age 0-5 Years
- Working Age Adults
- Senior Adults

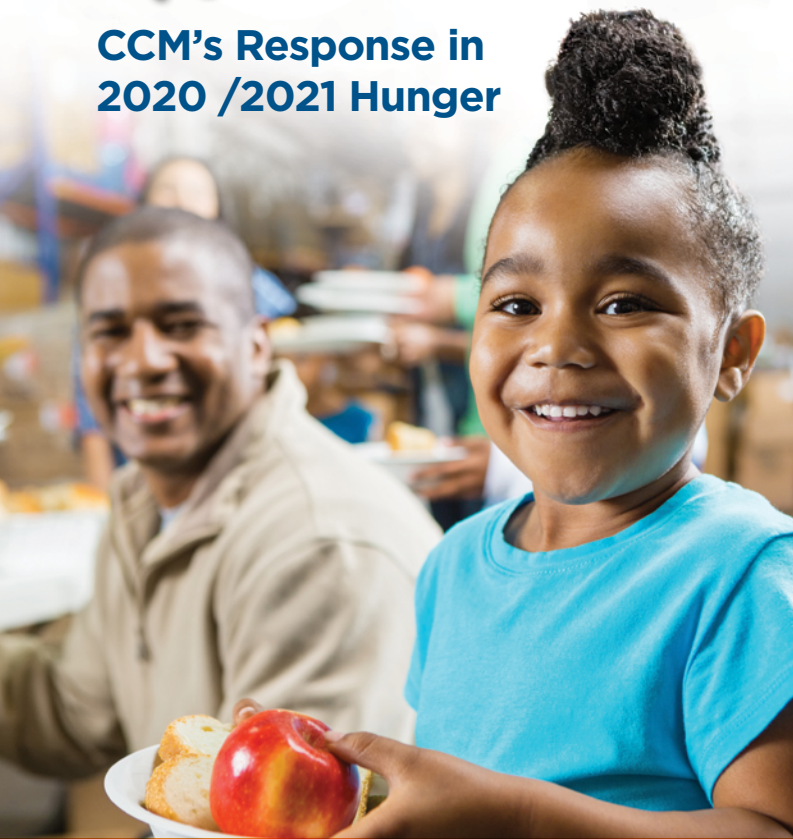
Our Strategic Priorities address

- Housing Stability & Recovery
- Early Childhood Development
- Employment Transitions
- Senior Adult Well-being



HUNGER PAINS ↑ REDUCE

CCM's Response in 2020 /2021 Hunger



Households that received groceries

14,111 Household visits,
representing
43,680 individuals
(including 17,853 children, 0-18)

FOOD DISTRIBUTED

1,098,819 lbs.
through CCM Food Programs

8,013 Prepared Meals

*"And if you spend yourselves in behalf
of the hungry and satisfy the needs
of the oppressed, then your light will
rise in the darkness, and your night will
become like the noonday."*

– Isaiah 58:10

FINANCIAL CRISIS ↑ HELP!

1,162 Needs addressed (total times of assistance)

863 Individual households

\$956,313.67 Distributed

578 Evictions avoided

553 Utility cut-offs avoided

28 Lodging, Medications and others

*"Don't forget to do good, and
to share what you have because
God is pleased with these kinds
of sacrifices."*

– Hebrews 13:16

The Challenge in Cabarrus County in 2020/2021

21% Population Growth (10 Years)
7.9% Living in Poverty - **17,099 People**
6,020 Households

Recorded Evictions

1,223 (2018) / 1,196 (2019)

100 per month, **23** per week, **3 to 4** per day
*2020 data impacted due to the COVID-19
eviction moratorium

413 Homeless Students

PRE-COVID: 500+ Students
(CCS & KCS for 3 consecutive years)
*data impacted due to COVID-19 school closures

207 Applications received for Housing

EXPERTS IN HOUSING RELIEF ↑ CRISIS

Homeless to Housing Stability

40 Families served

93 People / **50** children

*"Before coming to CCM, I faced homelessness,
hopelessness, trouble working and trouble finding
childcare. I had no transportation. I had very little
hope for my future. After my first phone call with
CCM, I felt lighter, like I might be getting some help.
I'm excited to see where the rest of the program
takes me and my family!" – CCM Housing Resident*



EDUCATION & SUPPORT ↑ SERVICES

"We are extremely excited about our
partnership with Multiply Church and the
Dream Center. We look forward to working
with our community partners in creating
and delivering Education & Support
Services in an Integrated Service Model.
This process will improve access to services
to help participants with multiple obstacles
obtain the set of services that best
meets their needs for gaining economic
independence."

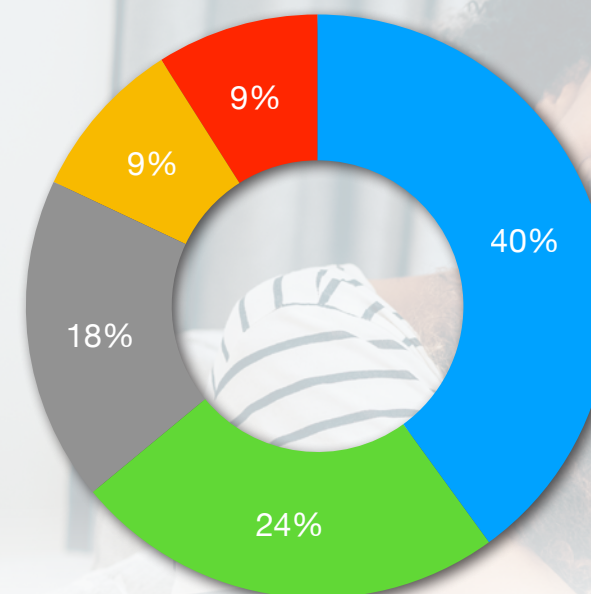
– **Pam Smith**

Director of Education & Support Services

WORKSHOPS INCLUDE:

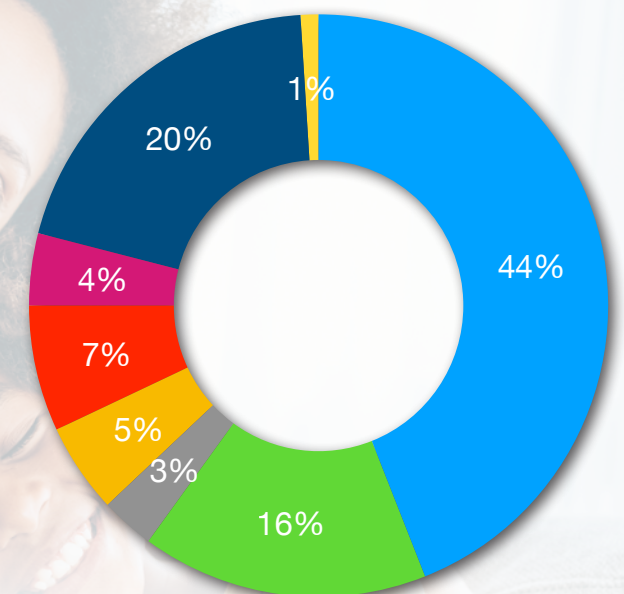
- Breaking Free from the Money Traps
- Getting Ahead in a Just Gettin' By World
- Bridges Out of Poverty
- Strengthening Families

EXPENSES - TOTAL \$4,972,607



- Hunger Relief
- Financial Relief
- Housing Program
- Administration & Fundraising
- Renovation to Restoration

REVENUE - TOTAL \$5,208,868



- Donated Food/Other In-Kind
- Businesses/Corporate Foundations
- Foundations/Grants
- Social Enterprise & R2R
- Churches/Church Groups
- Government Agencies
- Community Groups & Others



Praise God from whom ALL blessings flow!

On Monday evening October 4th, CCM held its annual "Celebrate HOPE" event, which was broadcast virtually via livestream on the Ministry's website and social media channels. If you were not able to join the livestream on 10/4, we encourage you watch it by clicking [HERE!](#)

A heartfelt THANK YOU to **SHOE SHOW, INC.**, namely **Bob & Carolyn Tucker** for their continuous generosity towards CCM. To the extended Tucker family, we offer our gratitude as well!

CCM is blessed to have an incredibly supportive Board of Directors, whose prayerful guidance and direction have laid a solid foundation for our Ministry in the years to come.

To our faith community partner, **Crossroads Church**, we THANK YOU for once again hosting us in your beautiful worship center. To our partnering agency at Cre8tve, we're grateful to **Ritchie Elkins** and his team for all the graphical and branding support behind the event. To **Jennings Burchfield at Unlocked Films & Marketing**, we also say THANK YOU for the superb video content product that we were able to deliver through our broadcast. And to **Eventfully Angela** and our event partner **Angela Skeen**, we are so very appreciative of our partnership and for your work in the planning and execution of this event year after year!



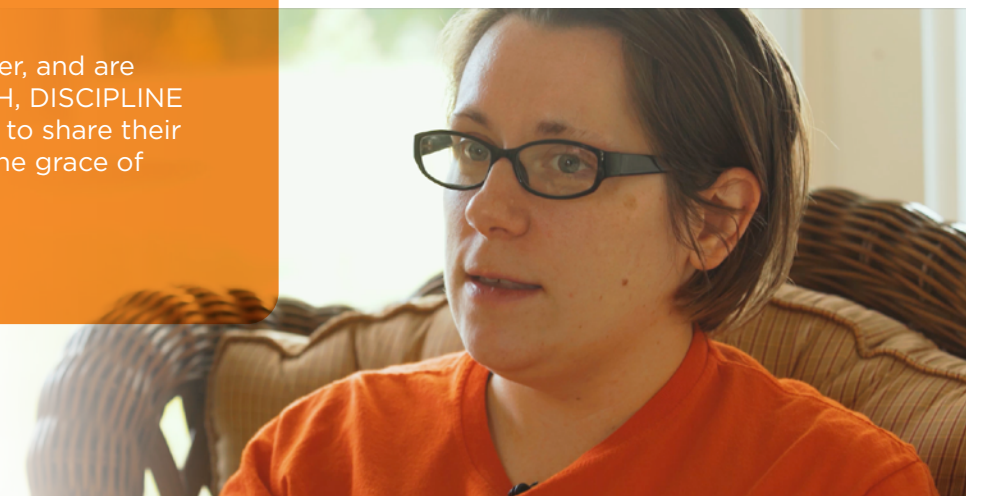
CLICK
TO VIEW
VIDEO



One Year Later

One year ago, while sitting amongst fellow residents at My Father's House, both Llelani & Julie gave testimony of how life circumstances had forced them into a situation they never dreamed would happen to them. By way of God's goodness and through CCM's Housing program, both have made tremendous progress in their pursuit in regaining stability.

Llelani & Julie are back, one year later, and are glad to share their story of GROWTH, DISCIPLINE and DISCERNMENT. But most of all, to share their story of HOPE that only comes by the grace of God!



"The CCM Housing Team has had the absolute pleasure watching Julie transition from My Father's House, to Mother's and Children's Housing, and eventually in her own teaching house. Although Julie's journey has not been one without obstacles to overcome, she has shown a willingness to learn and grow to move towards independence, as well as remaining committed and trusting the process of the housing program."

-Katie Crouse, CCM Housing Care Manager

"The CCM Housing Team has been overwhelmed by Llelani's tenacity, focus, and strength as she has overcome countless obstacles with grace and dignity. In her progression from My Father's House, to Mother's and Children's House, to her very own teaching house, Llelani has exhibited a steadfast commitment to the housing program, to her daughters, and to the Lord."

-Natalie Camilli, CCM Housing Program Specialist

TWO BOLD INITIATIVES FOR 2022-2024



H2H HOMELESS TO HOUSING

- Families with Children
- Senior Adults
- Disabled Adults

PURPOSE: The Homeless to Housing (H2H) Project is a partnership between our community and Cooperative Christian Ministry (CCM) to establish new transitional housing capacity that will help individuals and families experiencing homelessness and housing crisis, to achieve stable housing.

The H2H Project is designed around a facility that can serve 50 households of families with children, senior adults and adults with disabilities who are experiencing homelessness or housing crisis. The initial impact will double CCM's current capacity of its entry programs (My Father's House and Mothers & Children) to 30-45 households and increase the program's capacity by 400% when fully implemented. At full capacity, this facility and program will serve 180-220 adults and children, which represents approximately half (50%) of the current level of need for these populations.

Debt Reduction
Employment
Family Stability
Academic Stability
Credit Score Improvement

Savings Account
Healthy Lifestyle
Nutrition Habits
Established Transportation
Financial Education

Childcare
Healthcare Resources
Personal Responsibility
Life Skills
Social Connectivity

The Huddle Housing concept is designed to provide the basic needs of food, housing and community in an environment that allows an individual to establish stability and connect with vital resources while promoting personal responsibility and community engagement.

The Huddle Housing model is designed to meet the needs of senior adults, veterans and single adults with disabilities who are low and extremely low income and are capable of self-care. The program design is sensitive to the desire for independence or the specific need for companionship of service animals. The program will provide daytime staff to coordinate access to facilities, meals and services. The community building will facilitate shared community responsibilities, activities and access to resources. Residents will share responsibility to maintain properties, prepare community meals, and pursue individual development plans.



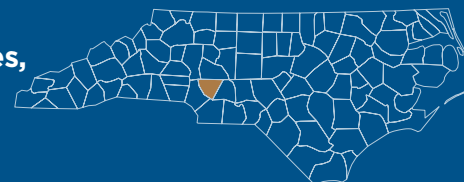
HUDDLE HOUSING EXTREMELY LOW INCOME

- Self-sufficient
- Disabled
- Veteran

Program Sustainability
Healthy Lifestyle
Nutrition Habits

Personal Responsibility
Participant Accountability
Social Connectivity

Good Financial Practices
Establishment of Credit



CCM in the Community

Click to find these community offerings and more on our website.

[CooperativeMinistry.com](https://www.cooperativeministry.com)

CHRISTMAS ASSISTANCE PROGRAMS

Adopt-A-Family

The Adopt-A-Family Program is designed to help those that are in the most critical need this holiday season and is coordinated by CCM. The program pairs referred clients/families with groups or individuals who have volunteered to "Adopt" a family for Christmas.

Senior Care & Share Shoeboxes

Many seniors live on fixed incomes and find themselves very much alone. A Senior Care & Share Shoebox or Bag spreads holiday cheer to someone who may not have much to look forward to this time of the year.



The City of Concord offers an easy way for you to participate in a program called **Neighbor Helping Neighbor**. Donations can be made by rounding up your utility bill to the nearest dollar amount.



Churches, businesses, community groups, families, individuals and local government rally together to make a positive impact on our neighbors through local service projects and by serving each other.



Non-Profit Workshop

This workshop is an opportunity for nonprofit executives, staff, and volunteers to engage in professional development that will strengthen their impact in our community.



Pastor/Leader Breakfast

This is a time for the faith community to come together to share their voice, insight, and passion concerning the issues facing our community.



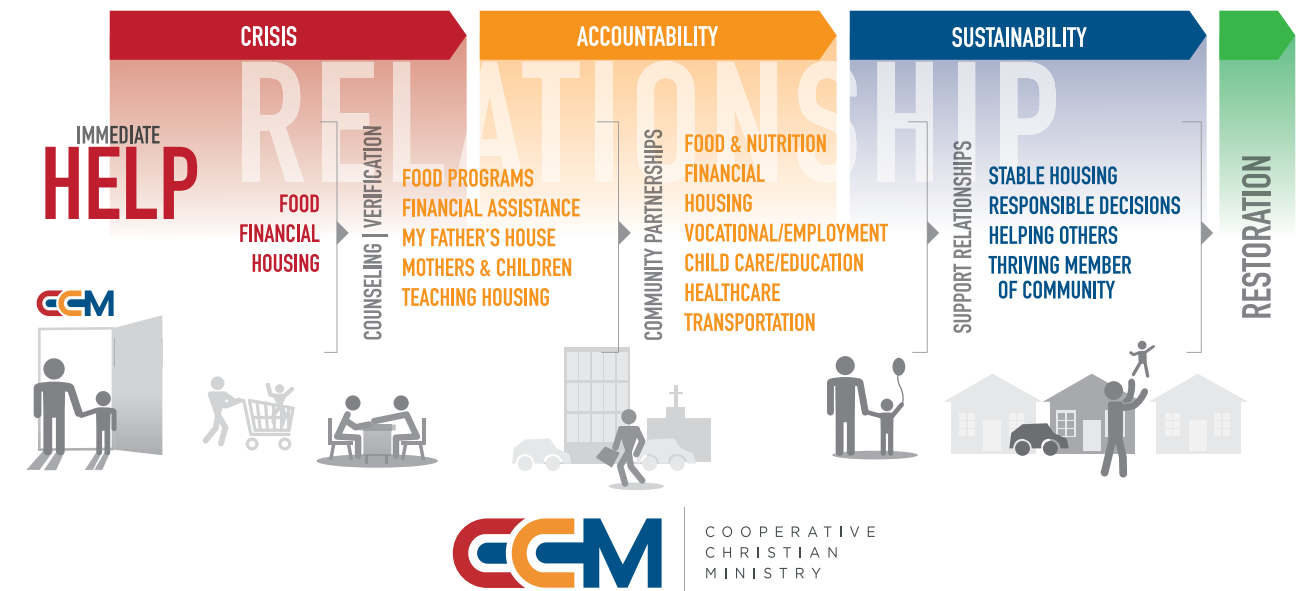
Business Breakfast

Business leaders in our community hear current CCM ministry updates and learn about partnership opportunities that will impact our community.

Our Commitment

Click the graphic to view a video.

CRISIS TO RESTORATION



Delivering Crisis Resources **Expanding** Transitional Housing
Engaging with Supportive Communities
Providing Resource Navigation **Creating** Volunteer Opportunities

BUT THAT'S NOT ALL...

In areas that directly affect outcomes for the people we serve, CCM will...

- Strengthen our efforts to ensure access to appropriate early child care & nutritional resources
- Incorporate computer and technology training for students in our program
- Expand on-the-job training opportunities and apprenticeships within our own programs and pursue job placement, career education, vocational training and re-training for adult populations in transition
- Expand partnerships for primary care, health education and mental health & substance use resources for vulnerable populations

OUR PARTNERS... **LOOK LIKE YOU!**

Total Volunteers = 787
Total Hours = 30,392

- | | |
|------------------------|---------------------|
| • Pantry Assistant | • Childcare |
| • Interviewer | • Tutor |
| • Data Entry | • Class Facilitator |
| • Mobile Food Pantries | • Photographer |
| • Van Driver | • Painter |
| • Meal Provider | • Repairs |
| • Office Assistant | • Yard Work |
| • Host a Food Drive | • Helper |

"The gratification of knowing that I played a small part is incredibly rewarding, but even more so - allowing the Gospel of Jesus to be at the forefront of those efforts is ultimately the reason why I volunteer."

- CCM Food Program Volunteer

Help Your Neighbors In Need!

- **Learn:** become informed about CCM and who we serve
- **Get Involved:** we encourage you to volunteer
- **Give:** so we can do more to help our neighbors in crisis

WAYS TO GIVE (CLICK HERE)

- **ONLINE:** CooperativeMinistry.com
- **venmo** @CCMConcord
- **Cash/Check mailed to:** PO Box 1717 Concord, NC 28026

Phone: 704-786-4709

