

2024 ANNUAL REPORT

DRIVING TRANSFORMATION

HE DOES THE **IMPOSSIBLE**



COOPERATIVE
CHRISTIAN
MINISTRY



ED HOSACK
CHIEF EXECUTIVE
OFFICER

BREAKTHROUGH

The North Carolina Housing Coalition (NCHC) reports more than half of Cabarrus county's renters are housing cost burdened. Nearly 22,000 households in our community are struggling to make ends meet as the costs of all other essential household expenses carry the effect of inflation.

Many individuals and families struggling against the current economy are experiencing crisis that is depleting their savings, damaging their credit and destroying their financial stability.

"When housing costs become too much, a family can lose their home. This takes an incredible toll not only on a family, but also on the entire community." (NCHC)

Any household that loses their housing without equity to carry forward will find it nearly impossible to re-house in the current housing market.

**Cabarrus County needs a
BREAKTHROUGH in our efforts to
solve the housing crisis!**

We believe God has given CCM a vision in our Bold New Initiative that will significantly improve our ability to respond to individuals and families in housing crisis. Grace Place @ Caremoor and the Rebuilders Campus at Brown Mill Commons will create transitional housing opportunities for those in our rapidly

growing senior adult population, families with children and others trapped in a cycle of loss.

Creating these two solutions will require a tremendous response from the Cabarrus community. The combined resources of our neighbors, businesses and churches can move us toward this goal AND with God's help – make the impossible possible.

We are asking for 10% of our Cabarrus County households, businesses and churches to make a Promise Level gift of \$1,200 to the Bold New Initiative. The gift may be one-time or pledged over one, two or three years. Participation by only ten percent of us will involve over 8,000 entities and yield \$10 million to create these two housing solutions in our community. PLEASE JOIN US!

evictions

**Among the 100
counties in North
Carolina, Cabarrus
County ranks #6
for evictions among
renter households.**

renters

**51% of renters have
difficulty affording
their homes.**

New Horizon Strategic Plan

Our focus is on Five Goals to achieve positive and meaningful outcomes for these populations and priority areas.



Our Priority Populations are

- Individuals & Families in Crisis
- Children Age 0-5 Years
- Working Age Adults
- Senior Adults

Our Strategic Priorities address

- Housing Stability & Recovery
- Early Childhood Development
- Employment Transitions
- Senior Adult Well-being

WHAT'S HAPPENING NOW

Even as CCM pursues our Bold New Initiative to expand transitional housing resources in Cabarrus County, the need for hunger relief and crisis financial assistance continues to intensify quarter over quarter.

While our community is not unique, the needs in our community are elevated by our higher population growth, escalating housing costs and inflationary pressures on all other household essentials. We need the help of our Cabarrus community to continue addressing crisis needs on a daily basis.



\$93_k

CCM spent \$93,000 over a recent twelve-month period to purchase groceries to supplement our local food pantries - nearly double anticipated.

50_{apps}

Over 50 applications per month for housing assistance

\$_{assistance}

Applications for Financial Assistance far exceeding our capacity to address

urgent need!

This is an URGENT request for help to ensure CCM can continue to mitigate the impact of crisis on our Cabarrus county businesses, neighborhoods and schools.

Without the generosity of our community, CCM will not be able to continue addressing the level of need the community has relied on us to deliver over these last four years.

Gifts to support the ongoing relief services of CCM are essential to helping others.

the rebuilders campus

at Brown Mill
Commons

TRANSFORMING

PARTNER WITH US!

The housing crisis in Cabarrus County is real, and Cooperative Christian Ministry is responding with a bold and transformative solution: **The Rebuilders Campus at Brown Mill.**

This innovative campus will provide safe, supportive housing and essential resources for families, seniors, and individuals seeking stability. With amenities like the Brown Mill Commons retail and education hub, an activity center, and collaborative spaces for nonprofits, this campus is designed to empower residents and strengthen the entire community.

The Vision

- **96 family apartments:** Providing stability for those in need
- **Campus Activity Center:** Childcare, after-school activities, and community events
- **Brown Mill Commons:** A retail, education, and wellness hub
- **Vocational Training & Job Opportunities:** Serving both campus residents and the wider community

Today, construction is underway—but there's more to be done. Out of Cabarrus County's households and businesses, **we are asking just 10% of the population** to step forward with a "Promise Level" gift of \$1,200. This could be a one-time donation, \$100 per month for a year, or \$35 per month over three years.



GLIVES!

Why 10%?

If 8,000 households and businesses join us, we will raise the \$9.6 million needed to complete this life-changing campus.

Watch the Video Now:

Hear directly from our CEO, Ed Hosack, and see the vision come to life at RebuildersCampus.com/#rotm.

RUN OF THE MILL

Join the Movement: Be part of this transformational project. Your contribution matters.

Make your Promise gift today and be a part of the 10% that make a lasting impact!



Progressive Senior Care at Grace Place @ Caremoor

Nestled in the heart of Cabarrus County, Grace Place @ Caremoor Retirement Community offers a peaceful country setting just minutes from I-85 and a short drive from Uptown Charlotte. Our small, family-like community provides personalized care in a warm, intimate environment.

Grace Place @ Caremoor takes a phased, progressive approach to senior living, allowing residents to transition smoothly from independent apartments to higher levels of care as needed. This ensures continuity, minimizes stress, and provides peace of mind for both residents and their families.

Caremoor.com

**CHECK OUT THE
[REBUILDERSCAMPUS.COM](https://RebuildersCampus.com)
FOR FURTHER UPDATES**



INVEST IN YOUR
COMMUNITY

CCM'S IMPACT IN **FY 2023/2024**

CHALLENGE IN CABARRUS COUNTY IN FY 2023/2024

Cabarrus County Population
in 2024 - **244,123**
% Population Growth - **1.74%** over 2023
% Cost Burdened - **28%**
of Households living in poverty - **21,797**
Recorded Evictions - **1,591**
(5% increase from 2023)
Homeless Students - **657**
(16% increase from 2023)

HUNGER

Household visits (not unique households) that received
groceries from all CCM Food Programs - **21,213**
People - **49,793**
Children (0-18) - **18,793**
Older Adults (65+) - **5,955**
Pounds of food distributed through CCM Food Programs - **1,081,009 lbs**
(540.5 tons)
(not counting what was shared with partners, etc.)

MONTHLY AVERAGE

Households served - **1,768** (up 34%)
Individuals - **5,681** (up 37%)
Children (0-18) - **2,150** (up 41%)
Older Adults (65+) - **632** (up 27%)

FINANCIAL CRISIS

Needs addressed - **551**
\$\$\$ Distributed Total = **\$240,958**
Evictions avoided - **235**
Utility cut-offs avoided - **316**

HOMELESSNESS

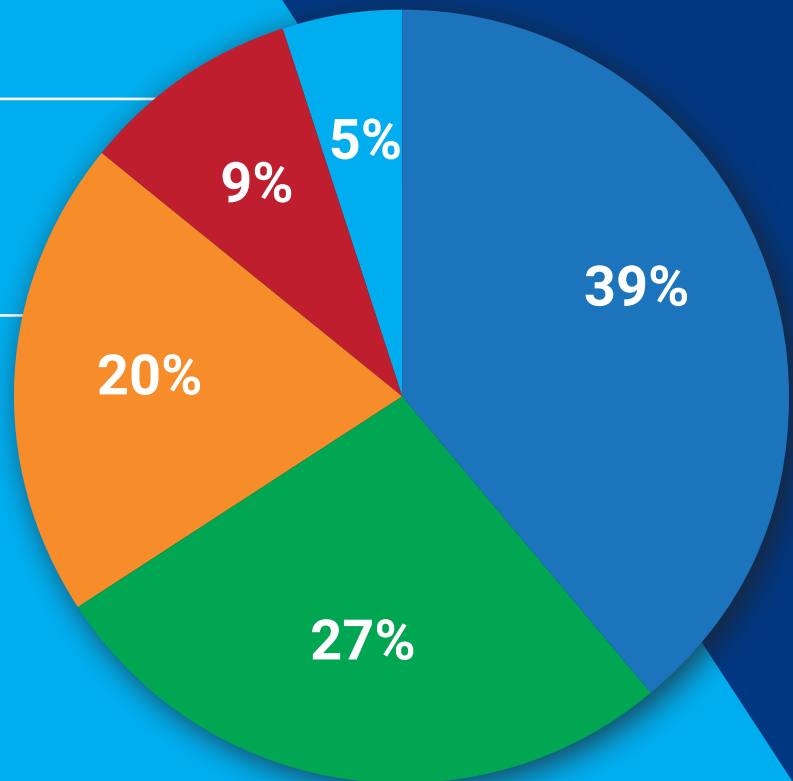
Families housed – **34**
Total People – **88**, including **44** children
Cabarrus County Schools Tutoring Program
partnership for 2023- 2024 school year
of students participated - **9**
2024 Summer Camp – CCM Housing Residents
of children participated - **13**

VOLUNTEERS

Total # of Unique Volunteers: **984**
Total # of Volunteer Hours: **33,990**

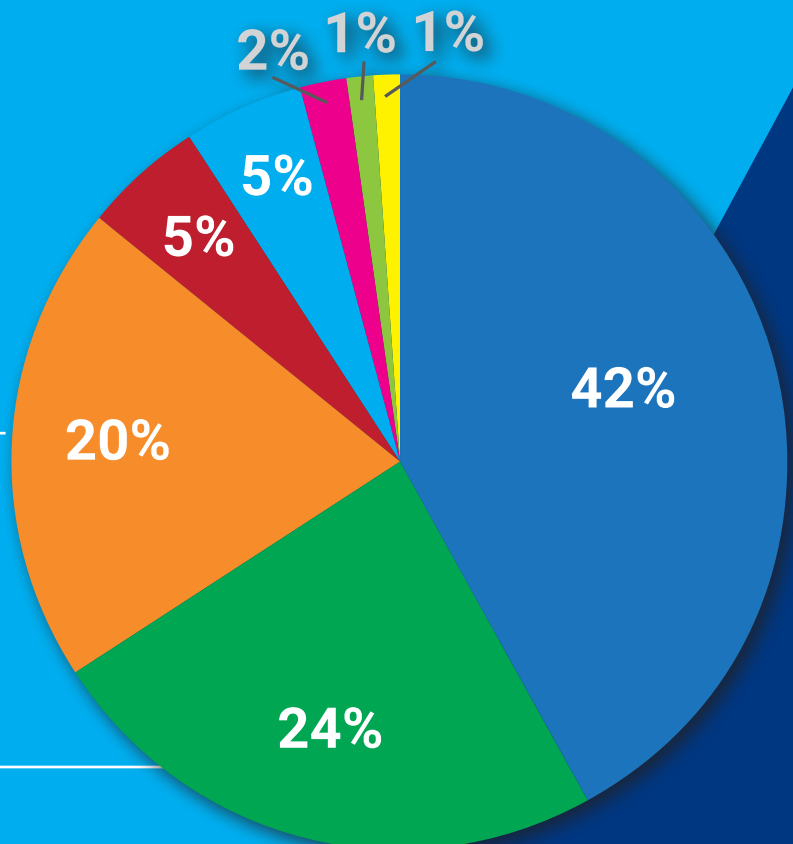
EXPENSES

- Hunger Relief
- Financial Relief
- Housing Programs
- Administration & Fundraising
- Education & Support Services



REVENUES

- Donated Food/Other In-Kind
- Individuals
- Businesses/Corporate Foundations
- Foundations/Grants
- Social Enterprise
- Churches/Church Groups
- Government Agencies
- Community Groups & Other



RESTORING HOPE IN THE LIVES OF **THOSE IN CRISIS!**

The **Senior Adult Resource Guide** is a tool providing an array of resources to help meet the needs of Senior Adults. Scan the QR code below for a list of resources in Cabarrus County.



SCAN TO
LEARN MORE

or visit
CooperativeMinistry.com



FOOD RESOURCES

There are many locations in Cabarrus County and the surrounding areas that provide both healthy produce and other perishable/non-perishable foods. Scan the QR code to the right to see the locations and hours of operation for these resources.

SCAN TO
LEARN MORE



CABARRUS COUNTY
America Thrives Here

OUR PARTNERS ARE OUR STRENGTH

Total Volunteers **984** = Total Hours **33,990**

- Pantry Assistant
- Interviewer
- Data Entry
- Mobile Food Pantries
- Van Driver
- Meal Provider
- Office Assistant
- Host a Food Drive
- Childcare
- Tutor
- Class Facilitator
- Photographer
- Painter
- Repairs
- Yard Work
- Helper
- Committee Member



ANSWERING THE CALL

"I was in a growth group at my church, and we were challenged to do a service project. One of the ladies in my growth group works here at CCM, and so she brought us in. We went into the food pantry, and as a team, we helped serve our community. I felt in that moment that God spoke to me and laid on my heart that this ministry is amazing and that I needed to be a part of it."

– Leanne Gilleland
Director of Relief Programs

"My family was so very supportive when I decided to quit my job and start volunteering at CCM. I felt like God put a calm in my heart. I felt like I was a better mom—more patient and loving. One thing the Lord continues to show me is the opportunities I've received through the local church and having a family with a heart to serve. We need to give back. The Lord doesn't give you things to hold on to; He gives you things to share with others."

– Melinda Edgerton
Housing Care Coordinator

God does exceedingly, abundantly above all you can ask or think. I could not even think to ask, "Hey, can I come and work for CCM?" I received a call from CCM because there was a program getting ready to open, and they felt like I would be the best fit for the program. It spoke to me, and I said, "Yes, I'll do it."

– Pennyeda Patterson
Housing Services Program Manager

"After I graduated from CCM Housing, I ended up receiving a job with Cabarrus County Social Services, where I became a CPS caseworker. Then, the opportunity came up for me to join CCM on the Housing team. It was always in the back of my mind to make sure that people felt comfortable because I remember how I felt when I came through the program. I was just a person who needed help. If I could share my story with someone coming through the housing program, it might help and encourage them."

– Tyanna VanDyke
Housing Services Program Manager



SHOE SHOW
INCORPORATED

SHOE SHOW HALF-MOON SHOE DEPT.
OUTFITTERS

CCM IN THE COMMUNITY

Find these community offerings and more on our website.

CooperativeMinistry.com

COMMUNITY INITIATIVES

- The Homelessness Task Force
- The Hunger Task Force
- The Unsheltered Impact Group
- Healthy Cabarrus Advisory Board
- The Housing Coalition
- Dream Center Partners



The City of Concord offers an easy way for you to participate in a program called **Neighbor Helping Neighbor**. Donations can be made by rounding up your utility bill to the nearest dollar amount.



Non-Profit Workshop

This workshop is an opportunity for nonprofit executives, staff, and volunteers to engage in professional development that will strengthen their impact in our community.



Pastor/Leader Breakfast

This is a time for the faith community to come together to learn ways in which CCM is assisting our communities.



Churches, businesses, community groups, families, individuals and local government rally together to make a positive impact on our neighbors through local service projects and by serving each other.



Business Breakfast

Business leaders in our community hear current CCM ministry updates and learn about partnership opportunities that will impact our community.



Adopt-A-Family

The Adopt-A-Family Program is designed to help those that are in the most critical need during the holiday season and is coordinated by CCM. The program pairs referred clients/families with groups or individuals who have volunteered to adopt a family for Christmas.

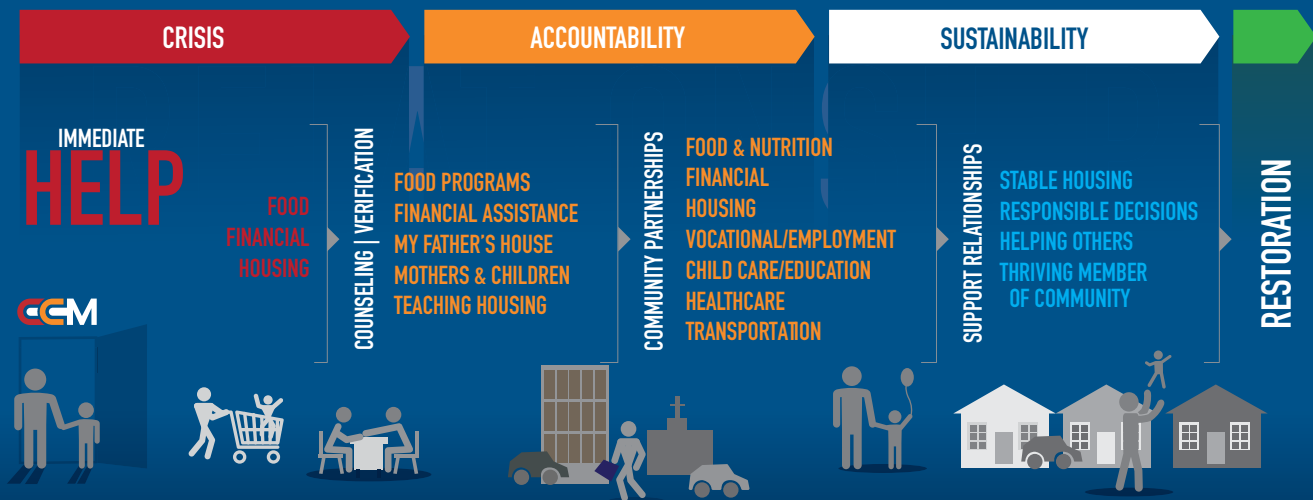
Senior Care & Share Shoeboxes

Many seniors live on fixed incomes and find themselves alone. A Senior Care & Share Shoebox or Bag spreads holiday cheer to someone who may not have much to look forward to this time of the year.

“So that there should be no division in the body, but that its parts should have equal concern for each other”

— 1 Corinthians 12:25-27

CRISIS TO RESTORATION



DELIVERING CRISIS RESOURCES
EXPANDING TRANSITIONAL HOUSING
ENGAGING WITH SUPPORTIVE COMMUNITIES
PROVIDING RESOURCE NAVIGATION
CREATING VOLUNTEER OPPORTUNITIES

BUT THAT'S NOT ALL...

IN AREAS THAT DIRECTLY AFFECT OUTCOMES FOR THE PEOPLE WE SERVE,
CCM WILL...

- Strengthen our efforts to ensure access to appropriate early child care & nutritional resources
- Incorporate computer and technology training for students in our program
- Expand on-the-job training opportunities and apprenticeships within our own programs and pursue job placement, career education, vocational training and re-training for adult populations in transition
- Expand partnerships for primary care, health education and mental health & substance use resources for vulnerable populations

YOU CAN **HELP**

LEARN: become informed about CCM and who we serve

GET INVOLVED: we encourage you to volunteer

GIVE: so we can do more to help our neighbors in crisis

WAYS TO GIVE

- **ONLINE:** CooperativeMinistry.com (Secure Give and PayPal options)
- **venmo** @CCMConcord
- **Check mailed to:** PO Box 1717 Concord, NC 28026

Phone: 704-786-4709



COOPERATIVE
CHRISTIAN
MINISTRY

