

PERSPECTIVE

FROM THE FRONTLINES

CELEBRATING 44 YEARS OF RESTORING HOPE



**CABARRUS
COUNTY**

HUNGER AND FOOD INSECURITY



ED HOSACK
CEO

There is a reality that we all can understand; the earlier you are able to address crisis, the more effective your response is and the less costly to resolve.

Addressing hunger and food insecurity may seem to some less critical than the housing crisis. To those who are on the front lines, it is the critical point at which we are most effective at avoiding future crisis.

The volume of requests for groceries at our food pantries is an indicator of developing financial crisis in Cabarrus County homes. The number of first-time visitors to our pantries and an increase in the number of monthly repeat visitors represent the broadening of the crisis across the community and a deepening of severity.

For some households, relief at the grocery store is not enough to stop the cycle of loss that begins to threaten utility bills. The juggling of due dates to avoid cut-off can deteriorate to the point of affecting rent or mortgage payments to the extent that the household is not able to halt the downward spiral, let alone reverse the crisis on their own.

Requests for food relief have become a reliable early indicator of anticipated trends in housing instability. Increases in food pantry visits of 28% in 2023 & 35% in 2024 project anticipated increases in housing crises that far exceed what we are experiencing today.



IN THIS EDITION

- Community Bulk Warehouse.....2
- Celebrate Hope3
- Rebuilders Campus Update.....5
- Upcoming Events 6
- Thank You7

FOR SOME FAMILIES IN CABARRUS COUNTY...

we could avoid the trauma of housing crisis for the price of groceries.

KANNAPOLIS RESIDENTS

An average of 435 Kannapolis area residents visit the Crisis Center in Concord monthly for food relief— total of 1,229 households during these eight months.

CCM plans to create a Crisis Center/Food Pantry in Kannapolis in or before 2028.

2021 TO 2025

CRISIS CENTER FOOD PANTRY

- The number of households requesting food relief **increased 59%**.
- The percentage of first-time visitors **increased to 35%**.
- The number of monthly visits **increased 79%**.
- The average visits per year by household **increased 12%**.

THE COMMUNITY BULK WAREHOUSE

The Community Bulk Food Warehouse (CBFW) will be a game changer in Cabarrus County's initiative against food insecurity. CCM will create a 15,000 square foot warehouse on Cabarrus Avenue in Concord to offer expanded capacity and new capabilities to local charitable food organizations.

On occasion, shipping errors or overstocks result in a carrier offering to donate a shipment of palletized food items. Many local food pantries do not have dock capability or turning radius to receive a tractor-trailer carrying donated food. Nor do most local pantries have the space to store palletized goods. All too often these limitations cause a local pantry to decline a spontaneous donation.

Small food pantries, lacking a vehicle or manpower to make periodic trips, may struggle to regularly access the Second Harvest Food Bank in Charlotte. By collaborating with America's Second Harvest, we will be able to improve access to food from

the Food Bank through the Community Bulk Food Warehouse. The CBFW will provide rack storage for palletized items and walk-in refrigeration for perishable items.

Construction and modifications to the CBFW are currently underway. CCM will begin storing dry goods and non-perishable food items at the warehouse in 2025, expanding our own capability and capacity to receive and store donated food. CCM will begin to provide access to temporary storage space for partnering food relief organizations serving Cabarrus County in 2026.

In addition to the Community Bulk Food Warehouse, the Community Services Building at Brown Mill Commons will be home to the Cabarrus County Nonprofit Collaborative Center and various local nonprofit operations. This facility will provide an opportunity to further strengthen the network of nonprofit organizations serving Cabarrus County.



2025 CELEBRATE HOPE



The 2025 Celebrate HOPE dinner & celebration brought together 400 attendees for a powerful experience centered around stories of hope and restoration, rooted in the goodness of God's love! Those present were treated to heartfelt narratives that highlighted resilience and the transformative power of HOPE, illustrating how individuals and families can overcome challenges and emerge stronger. It was an evening dedicated to celebrating God's provision with and through Cooperative Christian Ministry, resident and client BREAKTHROUGH moments, big and small, and reaffirming the belief that together, we can navigate through the most challenging of situations.

Following the inspiring evening, participants enjoyed a day of golf alongside SHOE SHOW, INC. vendor partners and friends. A beautiful, sunny day provided the perfect setting for the golf outing and a wonderful opportunity for networking, collaboration, and building relationships. A heartfelt THANK YOU to SHOE SHOW, INC., Mrs. Carolyn Tucker and entire Tucker family for their continuous generosity towards CCM. To Crossroads Church, Cre8tve, Eventfully Angela & Unlocked Films and Marketing, your support throughout the event planning and execution were imperative to our success!

This Celebrate HOPE & SHOE SHOW Golf Classic event is always more than just a gathering; it is a reminder that HOPE thrives within us all, and together, we can continue to inspire and uplift one another on our respective journeys. Thank you to everyone who gave or pledged your support to our on going ministry efforts! If you'd like to make a DONATION in support of Celebrate HOPE 2025, [click HERE!](#)



YOUR WINDOW OF
OPPORTUNITY
CAPITAL CAMPAIGN

LEARN & GIVE



2024-2025 FISCAL YEAR IMPACT

FOOD PROGRAM

841,584 MEALS PROVIDED

2,551 BACKPACKS DISTRIBUTED TO STUDENTS

18,950 VISITS AT PANTRIES

1,146,400 lbs. OF FOOD DISTRIBUTED ACROSS ALL PROGRAMS

FINANCIAL SERVICES

503 HOUSEHOLDS SERVED
(1,360 individuals)

\$233,592 FINANCIAL ASSISTANCE DISTRIBUTED

231 EVICTIONS PREVENTED

272 UTILITY CUTOFFS PREVENTED

33% OF FINANCIAL SERVICES CLIENTS REFERRED TO OTHER RESOURCES

TRANSITIONAL HOUSING

46 FAMILIES ASSISTED
(62 ADULTS, 85 CHILDREN)

90% OF FAMILIES ARE PROGRESSING SUCCESSFULLY THROUGH THE TRANSITIONAL HOUSING CONTINUUM

\$15,621 DEBT REDUCED

VOLUNTEER IMPACT

37,484 VOLUNTEER HOURS WORKED

1,111 VOLUNTEERS ACROSS ALL CCM CRISIS ASSISTANCE PROGRAMS



Here are some team photos from our Golf Classic fundraiser event sponsored by Shoe Show. This event took place at the Club at Irish Creek.



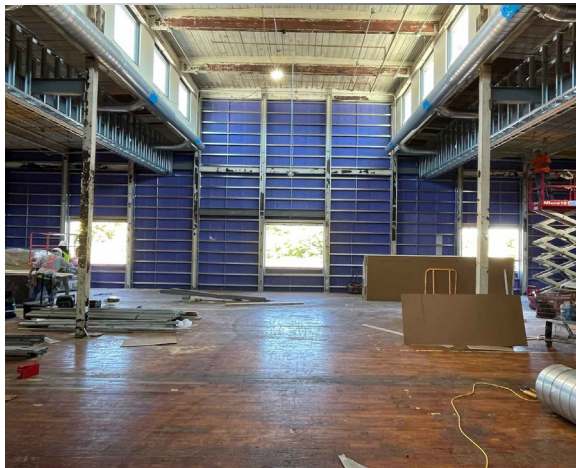
THE REBUILDERS CAMPUS UPDATE

CHA AT BROWN MILL: WIC

As Cabarrus Health Alliance prepares for its January 2026 opening at Brown Mill Commons, we're continuing to spotlight the essential services that will grow their reach and impact. This month, we're featuring CHA's School Health Leadership.

The School Health Division has staffed at least one school nurse in every school for twenty-five years. Nearly fifty school nurses serve at least 43,000 students annually through 110,000 encounters each school year, helping to ensure that students are cared for, and those who can, return safely to class. Brown Mill's central location provides ease of location for nurses and their supervisors. The large auditorium space also provides an efficient meeting area for the nurses to attend trainings and meet multiple times per year.

For more information about CHA, visit [Cabarrus Health Alliance, NC](https://www.cabarrushealthalliance.com).



DON'T FORGET TO WATCH "RUN OF THE MILL" VIDEO: THE HISTORY OF BROWN MILL

In the latest installment of The Rebuilders Campus **Run of the Mill** series, take a deep dive into the rich history of **Brown Mill**. Discover how this mill helped shape the local economy, community, and culture.

[Watch now](#) and see this powerful look at our past as we work together to rebuild a stronger future. Watch all 5 videos at RebuildersCampus.com.



And don't forget to follow @RebuildersCampus on Facebook and Instagram for more behind-the-scenes updates and impact stories.

UPCOMING EVENTS

THERE IS NO BETTER TIME THAN NOW TO GIVE BACK



Adopt-A-Family and Senior Shoeboxes

For more information visit our [website](#). To Adopt-A-Family or pack a Senior Shoebox for the holidays, contact Lorie Williams at 704-490-4245 or lwilliams@cooperativeministry.com.

Are you and your family looking for a simple way to give back this holiday season? Why not consider adopting a family or packing a shoebox full of goodies for a Senior? You will have the opportunity to make someone's Christmas much more meaningful!

You, your family, church group or business can "Adopt-A-Family", pack a "Senior Care & Share Shoebox" or simply drop off a gift card to be given to a family in need, at our Crisis Center, located at 246 Country Club Drive NE, Concord.

Senior Care & Share Shoebox Deadline:
Monday, **December 1st**

Adopt a Family for Christmas
Deadline: Monday, **December 15th**



MOBILE FOOD PANTRY SCHEDULE:

Thursday, October 30, 10:00-12:00 – Bethel Church of Midland (12700 Idlebrook Rd., Midland) – sponsored by Bethel Church



THANK YOU

We were honored to be a part of Missions Focus Week 2025 at **West Cabarrus Church**! On Sunday, September 28, CCM joined the Neighborhood Mission Focus during both services.

The event celebrated the impactful work of local and national ministries. CCM hosted an information table, to share our mission, highlight current initiatives, and connect with the WCC congregation and mission partners about opportunities to give and volunteer.

We also had a chance to showcase how God is working through CCM in our community at the Mission Focus Breakfast, with a presentation to the church leadership, and other mission partners and organizations.



We had a wonderful time participating in the **Youth Sunday Bean Packing** event on September 28! It was a pleasure to share the impactful work happening at CCM and to highlight how the generous bean donation is helping to feed neighbors in our community who are facing food insecurity.

Thanks to the energy and dedication of the **Kimball youth**, they donated 357 lbs. of food including the beans the youth packed. Their efforts are truly making a difference.

Big Shout-out to **Kingdom Builders** for sending a great group of eager and skillful volunteers to help us finish up our Seasonal Summer Projects. They came out and tackled some heavy-duty landscaping tasks at our Mothers and Children's House to make it ready for the fall season. We are so incredibly grateful to partner with a group of such passionate and Faithful Volunteers with the Kingdom Builders Men's group! Thank You!

SEPTEMBER FOOD DONATIONS

- All Saints Episcopal Church - 217 lbs.
- Connect Christian Church - 924 lbs.
- Speedway Harley Davidson Hog Chapter - 281 lbs.

FOOD PROGRAM PARTNER OF THE MONTH - LIFELINE CHRISTIAN CENTRE

This wonderful organization located in Gibson Mill in Concord coordinates "meal packs," putting together what we call "meal kits" of nutritious, fortified meals that just need to be boiled in water for a few minutes. They regularly share these meals with CCM's Food Program, as well as many other local organizations. We received 1,287 lbs. of food from them in September and a similar amount already in October. On October 24-25, Lifeline will hold a massive food-packing event at Atrium Health Ballpark, packing 150,000 rice & bean meals over the 2 days, all staying local. We are thrilled for the impact Lifeline is making in our community.

To learn more about Lifeline Christian Centre visit them at [Lifeline.org](https://www.lifeline.org).



CLICK TO VIEW
the full Strategic Plan

LEARN MORE

COMMUNITY PRAYER REQUESTS

Join with us in supporting our community through prayer. Watch as God works around us through our faithful prayers.

PRAY WITH US



FOOD RESOURCES

The 'Cabarrus County Food Resource Map', which was created by the Hunger Task Force, is available on our website. Please share this valuable resource with the community.

VIEW MAP



SENIOR RESOURCE GUIDE

We provide resources for housing, health, transportation, and more. Click the button to see all the resources we provide.

LEARN MORE



HELP with HOUSING

Our housing programs provide the opportunity for families with children, senior adults, and other adult individuals to stop the cycle of loss, establish sustainability, and achieve housing stability.

LEARN MORE



Sign up to round up your monthly City of Concord Utility bill to the nearest dollar and help keep the air, heat, and lights on for hundreds of families in need.

Visit: <https://concordnc.gov/Departments/Customer-Care/Neighbor-Helping-Neighbor>



COOPERATIVE
CHRISTIAN
MINISTRY

APPLY

NEW! CCM Career Opportunities

246 Country Club Drive NE, PO Box 1717
Concord, NC 28026 TEL: 704-786-4709



GIVE ONLINE: CooperativeMinistry.com or TEXT: ccmhelps to 44321