

PERSPECTIVE

FROM THE FRONTLINES

CELEBRATING 44 YEARS OF RESTORING HOPE



**CABARRUS
COUNTY**

44 YEARS AND COUNTING



ED HOSACK
CEO

Cooperative Christian Ministry (CCM) has been on the front line of Cabarrus County for more than four decades because you and folks like you have trusted CCM to provide assistance for relief and recovery to our neighbors in crisis.

Through local and national recessions, economic disasters and health crises, CCM has remained faithful and committed to our mission.

- for the **mother abandoned** we provide **help**.
- for the **child denied** we instill **hope**.
- for the **widow left alone** we respond with **care**.
- for the **worker rejected** we build **confidence**.
- for the **family caught** in a cycle of loss we are an **advocate**.
- for our **community** we are a **solution**.

At CCM, we recognize that we can help change circumstances, BUT only God transforms a life!

The people, businesses and churches of Concord, Harrisburg, Kannapolis, Midland, and Mount Pleasant have ensured that CCM is supported and equipped to address the needs of our neighbors at their time of vulnerability in crisis. With your help, we have served as a safety net, a refuge, a hand up, a source of education and a



COOPERATIVE
CHRISTIAN
MINISTRY

IN THIS EDITION

2030 Strategic Plan

Development	2
Rebuilders Campus Update.....	3
Capital Campaign	4
Upcoming Events	5
Thank You	6

beacon of hope for forty-four years AND we are still counting ... On You!

While thousands, perhaps tens of thousands, of households have recovered and emerged from crisis, many more today are challenged beyond their ability to overcome their present circumstances. In response, we continue to adapt within our mission to address the growing needs in our community.

The fact remains, we are still counting on you to:

- Engage in volunteering
- Contribute financially as you are able
- Pray for our staff, volunteers and our neighbors in crisis.

WE ARE COUNTING ON YOU TO:

1. **ENGAGE** in volunteering
2. **CONTRIBUTE** financially as you are able
3. **PRAY** for our staff, volunteers, and our neighbors in crisis

With God's help and your support - CCM will continue to meet crisis face-to-face in our community.

2030 STRATEGIC PLAN DEVELOPMENT

To date, CCM's 2030 Strategic Plan FOCUS GROUPS have met once with good discussion and ideation around the development of core objectives and strategies in support of the five goals. Updates from each group facilitator have derived that the emphasis of the ministry's 2025 strategic plan objectives and strategies are still prevalent today, but may require a slightly different approach or tactic to ensure those goals are met by 2030. In this September '25 newsletter, we'll provide a brief update on **GOAL 1 - HOUSING** and **GOAL 5 - OLDER ADULT SERVICES**.

HOUSING - With the development of transitional housing capacity at The Rebuilders Campus at Brown Mill Commons as well as Grace Place at Caremoor, we recognize that these plans are already in motion and one primary objective is to see through the completion of each campus. The focus group also noted that even through the building of new capacity, the CCM housing program models will need to include fluidity as we welcome family units, senior adults, disabled Veterans, etc. into our housing continuum. The group felt an urge to create an objective around

additional transitional housing capacity beyond the campuses, with an implication to develop and nurture partnerships with local property owners and development managers community-wide.

OLDER ADULT SERVICES - The CCM leadership team interprets this goal 5 as a compliment to goal 1, with already established partnerships with Elder Orphan Care, Coltrane Life Center and Cabarrus County DHS in place and experiencing measureable outcomes. This focus group agreed that increasing awareness of senior adult needs and available resources should remain a top priority through development of the 2030 plan. In addition, the importance of community impact (volunteering, etc.) for our senior adults was a topic that gained momentum among this focus group, but also ensuring the health, wellness and safety of this population as well.

Look for additional updates on **GOALS 2 & 4** in the October edition of our newsletter!

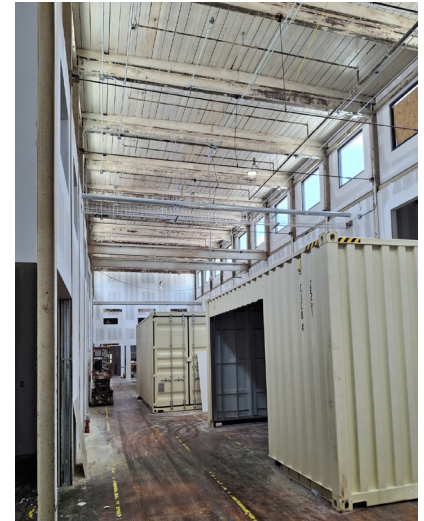
THE REBUILDERS CAMPUS UPDATE

CHA AT BROWN MILL: SCHOOL HEALTH SPOTLIGHT

As Cabarrus Health Alliance prepares for its January 2026 move to Brown Mill Commons, we're continuing to spotlight the essential services that will grow their reach and impact. This month, we're featuring CHA's School Health Leadership.

The School Health Division has staffed at least one school nurse in every school for twenty-five years. Nearly fifty school nurses serve at least 43,000 students annually through 110,000 encounters each school year, helping to ensure that students are cared for, and those who can, return safely to class. Brown Mill's central location provides ease of location for nurses and their supervisors. The large auditorium space also provides a large enough meeting area for the nurses to attend trainings and meet multiple times per year.

For more information about CHA, visit [Cabarrus Health Alliance, NC](https://www.cabarrushealthalliance.com).



NEW "RUN OF THE MILL" VIDEO: THE HISTORY OF BROWN MILL

In the latest installment of The Rebuilders Campus **Run of the Mill** series, take a deep dive into the rich history of **Brown Mill**. Discover how this mill helped shape the local economy, community, and culture.

[Watch now](#) and see this powerful look at our past as we work together to rebuild a stronger future. Watch all 5 videos at RebuildersCampus.com.



And don't forget to follow @RebuildersCampus on Facebook and Instagram for more behind-the-scenes updates and impact stories.

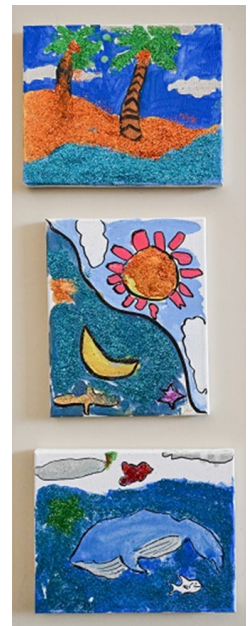
CAREMOOR/CAPITAL CAMPAIGN



CCM's Bold New Initiative includes **Grace Place @ Caremoor**, a multi-generational campus offering transitional housing, independent living and licensed assisted living environments.

Grace Place at Caremoor welcomes our third family. With a capacity for six families, we are pleased with our progression to three mothers and four children enjoying the Caremoor campus.

As we continue our capital campaign, Phase Three will help to complete infrastructure modifications and establish a raised bed garden, a playground and other recreational spaces.



Visit Caremoor.com to learn more.

YOUR WINDOW OF
OPPORTUNITY
CAPITAL CAMPAIGN

LEARN & GIVE



UPCOMING EVENTS

YOU'RE INVITED TO CELEBRATE HOPE WITH CCM!

Come hear how CCM is making a difference in our community and be inspired by real stories from people who are rebuilding their lives



you're invited
29TH ANNUAL
celebrate **HOPE**

CROSSROADS CHURCH
Monday October 6, 2025
5:00 pm - 7:00 pm

220 George W Liles Pkwy, Concord, NC 28027
Dinner and Program | Limited Seating.
Registration is required.

HOSTED BY
SHOE SHOW
INCORPORATED
SHOE SHOW HALF-MOON SHOE DEPT.

PRESENTED BY
 **Wealth Management**

REGISTER NOW

MOBILE FOOD PANTRY SCHEDULE:

Thursday, September 25, 10:00-12:00 - St. James the Greater Catholic Church Parish Hall Parking Lot (139 Manor Ave. SW, Concord) - sponsored by Knights of Columbus

Thursday, October 30, 10:00-12:00 - Bethel Church of Midland (12700 Idlebrook Rd., Midland) - sponsored by Bethel Church



THANK YOU

AUG. FOOD DONATIONS

- Crossroads Church VBS - 1,334 lbs.!!
- Brewington Farms - 2,226 lbs. of watermelons
- Poplar Tent Presbyterian Church - 486 lbs.
- Tour de Saints (All Saints Episcopal church) - 311 lbs.



Thank You, **Elevation Church!** During Elevation Love Week, volunteers — many of them children and youth — packed 500 pounds of dried pinto beans and rice for CCM's food program!

We're so grateful for your continued partnership with CCM.



A New Prayer Room at the Dream Center

CCM's Financial Services Department is excited to share the transformation of a once-simple office into a peaceful Prayer Room, thanks to the servant hearts of Michelle Deese and Cathy Kirby from Pitts Baptist Church.

Through their creativity, hard work, and prayerful dedication, the space has become a warm sanctuary where clients, volunteers, and staff can pause, reflect, and be refreshed in God's presence. We invite you to come experience it for yourself!

THANK YOU, ELLIS JEWELERS — A DIAMOND DIG FOR A GREAT CAUSE!

CCM wants to extend our deepest thanks to **Ellis Jewelers** for hosting the incredible Diamond Dig event

For just \$25 per scoop, participants got the exciting chance to win a **1 CARAT LAB-GROWN DIAMOND**, while supporting **Cooperative Christian Ministry** and **Cabarrus County Meals on Wheels**. Proceeds from the event help us continue providing critical services like food, housing, and crisis assistance to those who need it most in our community.



From left to right: Kimberly Strong - Cabarrus County Meals on Wheels, Dan Levinson - Ellis Jewelers and Jamie Richardson - Cooperative Christian Ministry



Ellis Jewelers Staff



CLICK TO VIEW
the full Strategic Plan

LEARN MORE

COMMUNITY PRAYER REQUESTS

Join with us in supporting our community through prayer. Watch as God works around us through our faithful prayers.

PRAY WITH US



FOOD RESOURCES

The 'Cabarrus County Food Resource Map', which was created by the Hunger Task Force, is available on our website. Please share this valuable resource with the community.

VIEW MAP



SENIOR RESOURCE GUIDE

We provide resources for housing, health, transportation, and more. Click the button to see all the resources we provide.

LEARN MORE



HELP with HOUSING

Our housing programs provide the opportunity for families with children, senior adults, and other adult individuals to stop the cycle of loss, establish sustainability, and achieve housing stability.

LEARN MORE



Sign up to round up your monthly City of Concord Utility bill to the nearest dollar and help keep the air, heat, and lights on for hundreds of families in need.

Visit: <https://concordnc.gov/Departments/Customer-Care/Neighbor-Helping-Neighbor>



COOPERATIVE
CHRISTIAN
MINISTRY

APPLY

NEW! CCM Career Opportunities

246 Country Club Drive NE, PO Box 1717
Concord, NC 28026 TEL: 704-786-4709



GIVE ONLINE: www.CooperativeMinistry.com or TEXT: ccmhelps to 44321